



£ 160000

1 Bed House, Alpine Court, Basingstoke

Barons Estate Agents are pleased to bring to the market this Duplex style property in need of some modernisation and with no onward chain. The accommodation on the ground floor comprises of an entrance hall with storage, bedroom and stairs to first floor . The first floor benefits from a lounge / dining room, kitchen, inner hall and bathroom. Outside is a storage cupboard and communal garden and allocated parking.

Location

Alpine Court benefits from local shops, Stratton Park and is in close proximity to bus routes, and Basingstoke Leisure Complex. This includes a 10 screen cinema, swimming pool, ice rink, bowling, restaurant and Milestones Museum. Basingstoke Town Centre offers Festival Place shopping centre, a mainline train line to London Waterloo and a vast selection of bars, restaurants and eateries.

Local Authority

Basingstoke & Deane Borough Council.

Council Tax

Band B

Extra Services

Barons Estate Agents will recommend the services of other businesses and may receive a referral fee in some instances where a buyer or seller uses the services of that company.

KEY POINTS & FEATURES

🏠 Entrance Hall

🏠 Inner Hall

🏠 Heating

🏠 Bedroom

🏠 Kitchen

🏠 Allocated Parking

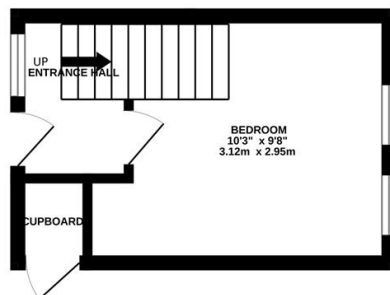
🏠 Lounge / Dining Room

🏠 Bathroom

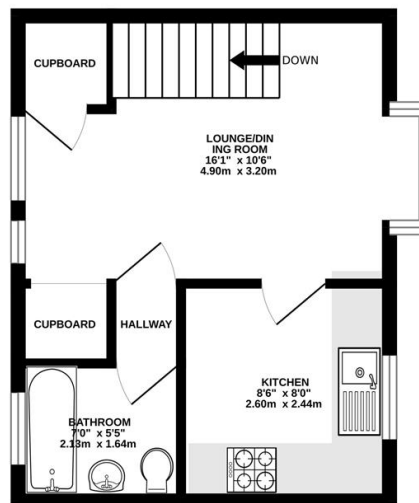
🏠 No Onward Chain



GROUND FLOOR
141 sq.ft. (13.1 sq.m.) approx.



1ST FLOOR
283 sq.ft. (26.3 sq.m.) approx.



TOTAL FLOOR AREA : 424 sq.ft. (39.4 sq.m.) approx.
Measurements are approximate. Not to scale. Illustrative purposes only
Made with Metropix ©2025