



£ 375000

3 Bed House - End Terrace, Breadels Field, Beggarwood, Basingstoke

Barons Estate Agents are delighted to present to the market this three bedroom end of terrace family home situated in Beggarwood. Internally, the property benefits from an entrance hallway, cloakroom, lounge, kitchen/dining room, two double bedrooms, 1 single bedroom and family bathroom . Externally, the property features a larger than average rear garden, driveway parking for at least 2 cars and garage . The property also benefits from gas central heating and double glazing throughout. A viewing is strongly recommended by the vendor`s sole agent.

Location

Breadels Field is located in Beggarwood and gives you access to M3 junction 7, A303, A30 and A33, along with the mainline railway to London Waterloo from Basingstoke Town Centre. Local doctors surgery, chemist and retail parks are close to hand with the main shopping centre Festival Place a short drive away, offering diverse shopping and restaurant dining.

Tenure

Freehold

Council Tax

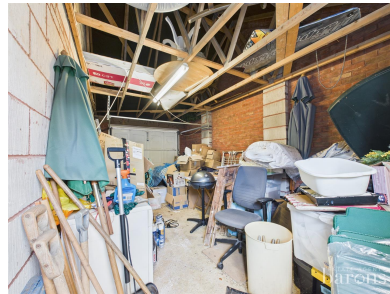
Band D

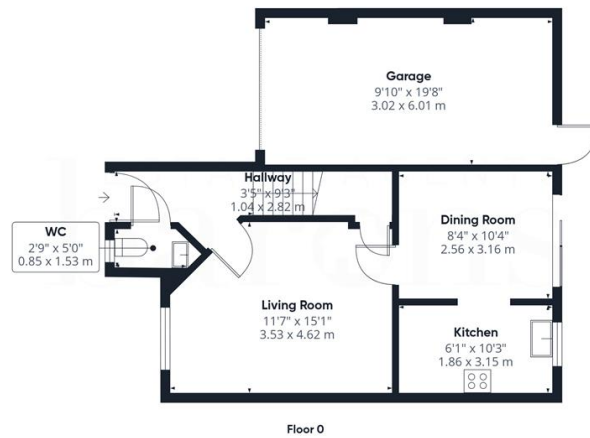
Extra Services

Barons Estate Agents will recommend the services of other businesses and may receive a referral fee in some instances where a buyer or seller uses the services of that company.

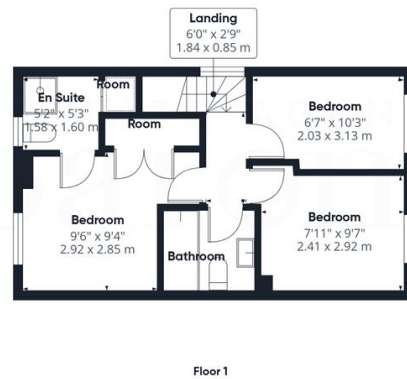
🏠 KEY POINTS & FEATURES

- 🏠 3 Bedroom
- 🏠 Kitchen & Dining Room
- 🏠 Larger Than Average Rear Garden
- 🏠 End of Terrace
- 🏠 WC, En Suite & Family Bathroom
- 🏠 Close to Amenities
- 🏠 Lounge
- 🏠 Driveway Parking for 2 cars & Garage
- 🏠 Sought After Location





Approximate total area⁽¹⁾
923 ft²
85.7 m²



(1) Excluding balconies and terraces

Calculations reference the RICS IPMS 3C standard. Measurements are approximate and not to scale. This floor plan is intended for illustration only.

GIRAFFE360