



£ 222000

2 Bed Maisonette, Penrith Road, Basingstoke

Barons Estate Agents are delighted to present WITH NO ONWARD CHAIN this two bedroom, 1st floor maisonette situated within close proximity to Basingstoke town centre. Internally, the accommodation comprises of an entrance hallway, two double bedrooms, a bathroom, kitchen/breakfast room and a lounge/dining room. Externally, there is a private garden, a garage, and permit parking on the road. Additional benefits include heating, double glazing throughout and NO ONWARD CHAIN. An early viewing of this ideal first time buy or investment opportunity would be strongly advised by the vendor's sole agent.

Location

Situated in popular Kings Furlong, the property is situated ideally for local schooling, Basingstoke College of Technology and local shops. Basingstoke town centre is situated within a mile offering Festival Place shopping centre, with mainline railway access to London Waterloo in 45 minutes. With access to the A30, A303 and M3 motorway the property offers all the benefits of modern day living.

Tenure

Leasehold:

934 Years remaining on the lease

Ground Rent: £50PA

Service Charge: No Service Charge

Council Tax

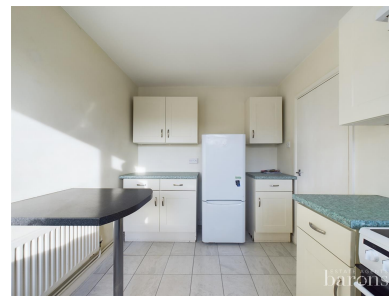
Band B

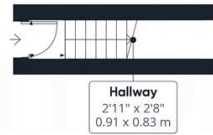
Extra Services

Barons Estate Agents will recommend the services of other businesses and may receive a referral fee in some instances where a buyer or seller uses the services of that company.

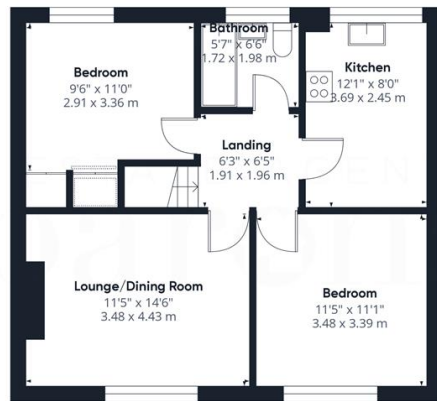
🏠 KEY POINTS & FEATURES

- | | | |
|--------------------------|------------------------|-------------------------|
| 🏠 NO ONWARD CHAIN | 🏠 2 Double Bedrooms | 🏠 Lounge/Dining Room |
| 🏠 Kitchen/Breakfast Room | 🏠 Bathroom | 🏠 Private Garden |
| 🏠 Garage | 🏠 Close to Town Centre | 🏠 Sought After Location |





Floor 0



Floor 1

Approximate total area⁽¹⁾
609.35 ft²
56.61 m²

(1) Excluding balconies and terraces

While every attempt has been made to ensure accuracy, all measurements are approximate, not to scale. This floor plan is for illustrative purposes only.

Calculations were based on RICS IPMS 3C standard. Please note that calculations were adjusted by a third party and therefore may not comply with RICS IPMS 3C.

GIRAFFE360