



£ 300000

3 Bed House - Terraced, Lundy Close, Basingstoke

Barons Estate Agents are delighted to present to the market WITH NO ONWARD CHAIN this 3 bedroom mid terrace family home. On the ground floor the property offers: an entrance hallway, kitchen, dining room, living room and WC. The first floor offers 3 well proportioned bedrooms and family bathroom. Externally the property benefits from: front and rear gardens, garage with access from the rear garden as well as ample communal parking. Viewings of this excellent property are strongly advised by the vendor`s sole agents.

Location

Lundy Close is situated to the North East of the town centre and offers good access to local schools and convenience shops. More extensive shopping is a short drive away at Chineham Shopping Centre and Festival Place. The A33 and M3 are easily accessible along with mainline railway to London Waterloo. For the outdoor person there are country walks, golf courses, National Trust Properties, eateries and pubs abound.

Local Authority

Basingstoke and Deane Borough Council

Council Tax

Band C

Extra Services

Barons Estate Agents will recommend the services of other businesses and may receive a referral fee in some instances where a buyer or seller uses the services of that company.

🏠 KEY POINTS & FEATURES

🏠 NO ONWARD CHAIN

🏠 Dining Room

🏠 Front & Rear Garden

🏠 3 Bedrooms

🏠 Living Room

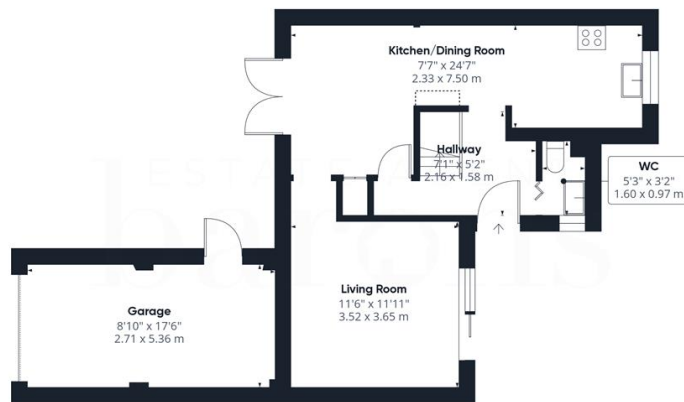
🏠 Garage

🏠 Kitchen

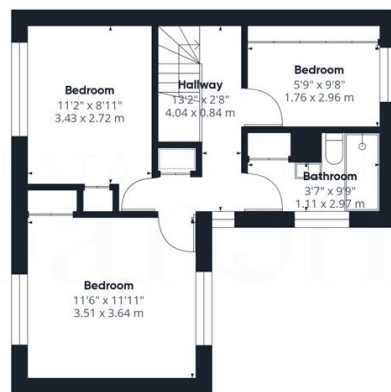
🏠 Family Bathroom & WC

🏠 Close to Amenities





Floor 0



Floor 1

ESTATE AGENTS
barons

Approximate total area[®]

1016.13 ft²
94.4 m²

Reduced headroom

3.05 ft²
0.28 m²

(1) Excluding balconies and terraces

Reduced headroom

..... Below 5 ft/1.5 m

While every attempt has been made to ensure accuracy, all measurements are approximate, not to scale. This floor plan is for illustrative purposes only.

Calculations were based on RICS IPMS 3C standard. Please note that calculations were adjusted by a third party and therefore may not comply with RICS IPMS 3C.

GIRAFFE360