



**£ 155000**

**2 Bed Retirement Property, Farm View Drive, Chineham, Basingstoke**

Barons Estate Agents are pleased to bring to the market this first floor over 60` s property. This property is situated in the desired Chineham estate and nestled in a quiet no through residential road. The accommodation comprise of an entrance hall, 2 bedrooms, bathroom, kitchen and lounge/dining room. Outside there is parking and well maintained grounds including a beautiful pond with fountain.

## Location

Farm View Drive is situated in Chineham, one of Basingstoke's most desired residential areas. Amenities near by include Chineham shopping centre which offers a Marks & Spencer, Tesco and a host of other shops and restaurants. Basingstoke town has an abundance of amenities which include the award winning Festival Place shopping centre along with a vast selection of eateries, theatres, a museum and bars. There is a mainline train to London Waterloo in 45 minutes, A33 and M3 access within a short drive along with the beautiful Hampshire countryside offering walks, golf courses, historical sites and local pubs.

## Tenure

Leasehold:

Years remaining on Lease: 60 Approximately

Service Charge: £1365.00. 25/06/2023-24/06/2024

Ground Rent: £75.00

Building Insurance Included.

## Council Tax

Band C

## Extra Services

Barons Estate Agents will recommend the services of other businesses and may receive a referral fee in some instances where a buyer or seller uses the services of that company.

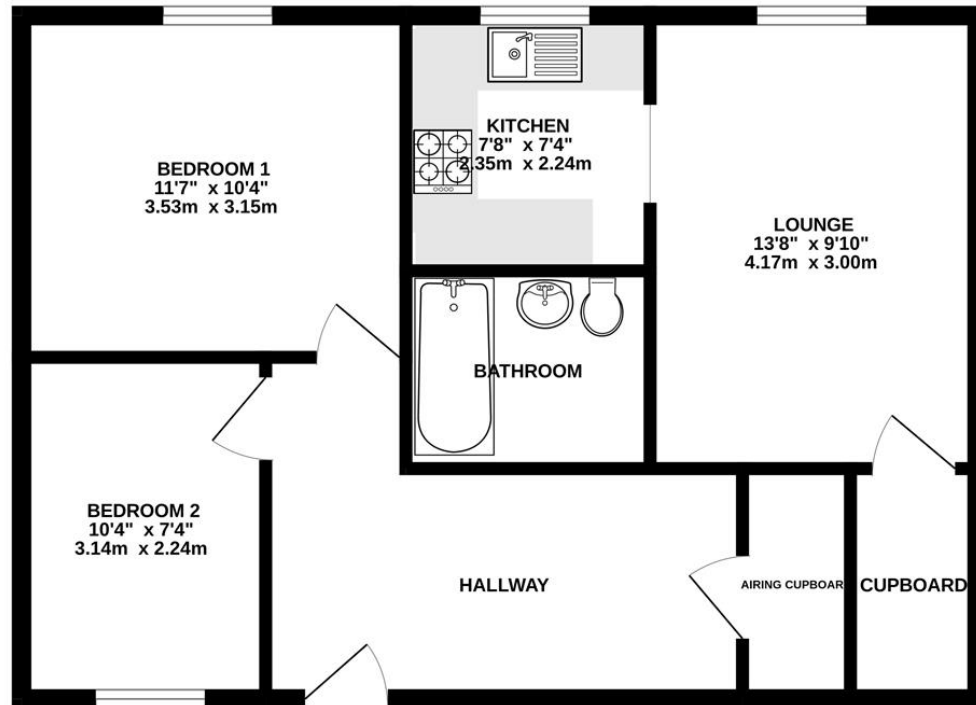
## 🏠 KEY POINTS & FEATURES

---

- 🏠 NO ONWARD CHAIN
- 🏠 Lounge/Dining Room
- 🏠 Sought After Location
- 🏠 2 Bedrooms
- 🏠 Bathroom
- 🏠 Communal Parking
- 🏠 Kitchen
- 🏠 Close to Local Amenities



FIRST FLOOR  
594 sq.ft. (55.2 sq.m.) approx.



TOTAL FLOOR AREA: 594 sq.ft. (55.2 sq.m.) approx.  
Measurements are approximate. Not to scale. Illustrative purposes only  
Made with MetroPix ©2025